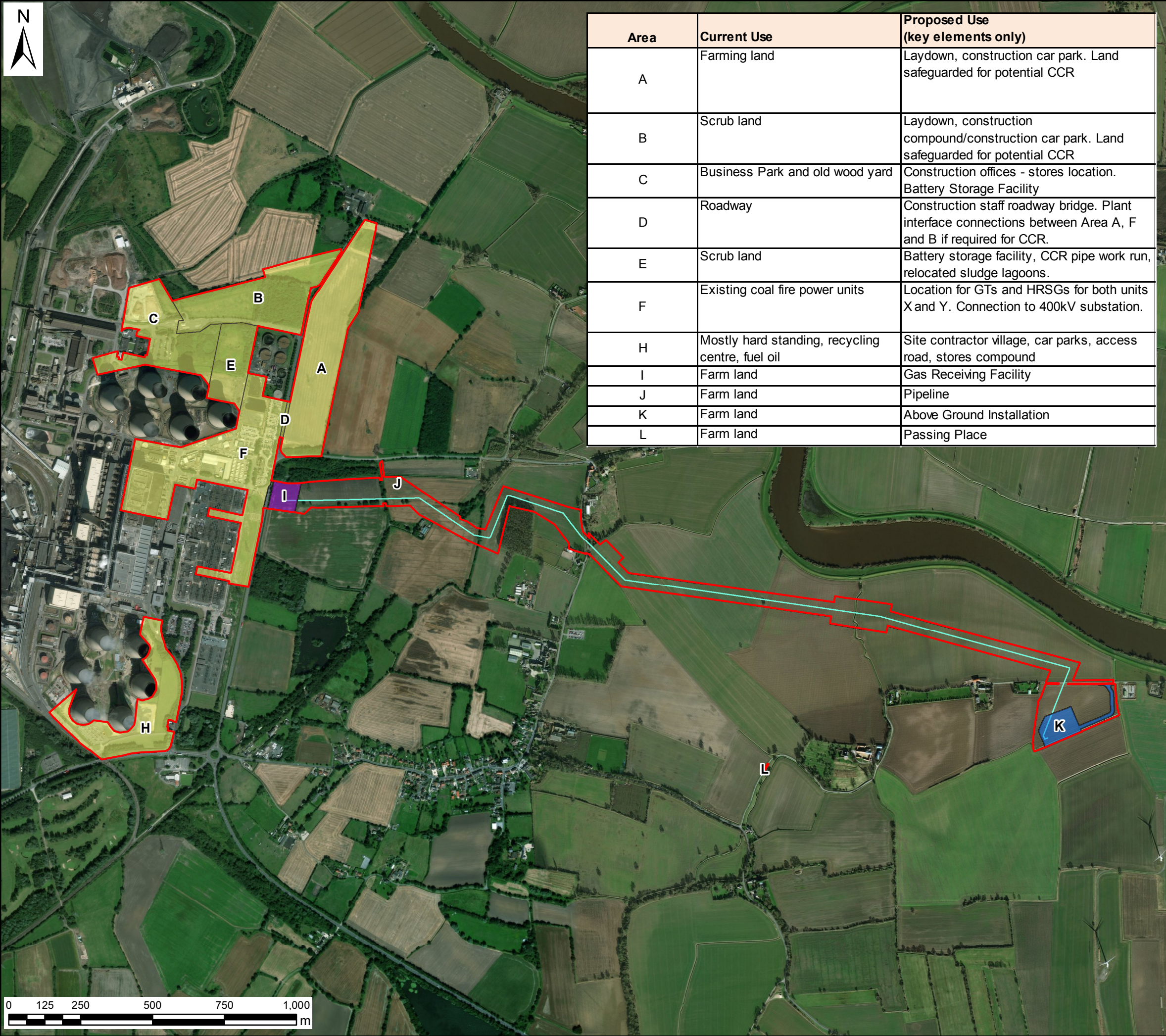


## 3.0 APPENDIX 3 - MAPS

User Name: UKRJMO17 | Date Saved: 18/05/2018 09:13:01  
Document Path: \\uk.wspgroup.com\central\data\Projects\70037047 - DRAX Re-powering DCO-Yorkshire\GIS\Mxd\IES\_IES\_Fig1.3\_CurrentAndProposedLandUse.mxd



Area	Current Use	Proposed Use (key elements only)
A	Farming land	Laydown, construction car park. Land safeguarded for potential CCR
B	Scrub land	Laydown, construction compound/construction car park. Land safeguarded for potential CCR
C	Business Park and old wood yard	Construction offices - stores location. Battery Storage Facility
D	Roadway	Construction staff roadway bridge. Plant interface connections between Area A, F and B if required for CCR.
E	Scrub land	Battery storage facility, CCR pipe work run, relocated sludge lagoons.
F	Existing coal fire power units	Location for GTs and HRSGs for both units X and Y. Connection to 400kV substation.
H	Mostly hard standing, recycling centre, fuel oil	Site contractor village, car parks, access road, stores compound
I	Farm land	Gas Receiving Facility
J	Farm land	Pipeline
K	Farm land	Above Ground Installation
L	Farm land	Passing Place

Key

Site Boundary

Development Parcels

Gas Receiving Facility

Above Ground Installation

Gas Pipeline

Contains Ordnance Survey data © Crown copyright 2018. All rights reserved. License number 0100031673 Source: Esri, DigitalGlobe, GeoEye, Earthstar Geographics, CNES/Airbus, USDA, USGS, AeroGRID, IGN and the GIS User Community

Infrastructure Planning (Applications: Prescribed Forms and Procedure) Regulations 2009 - Regulation 5(2)(a)

A	23/04/2018	RMcC	FIRST DRAFT	CS	CT
REV	DATE	BY	DESCRIPTION	CHK	APP

DRAWING STATUS: FINAL

wsp

Three White Rose Office Park, Millshaw Park Lane, Leeds, LS11 0DL, UK  
Tel: +44 113 395 6200 Fax: +44 113 395 6201  
wsp.com

CLIENT:

drax

PROJECT:

The Drax Power (Generating Stations) Order

TITLE:

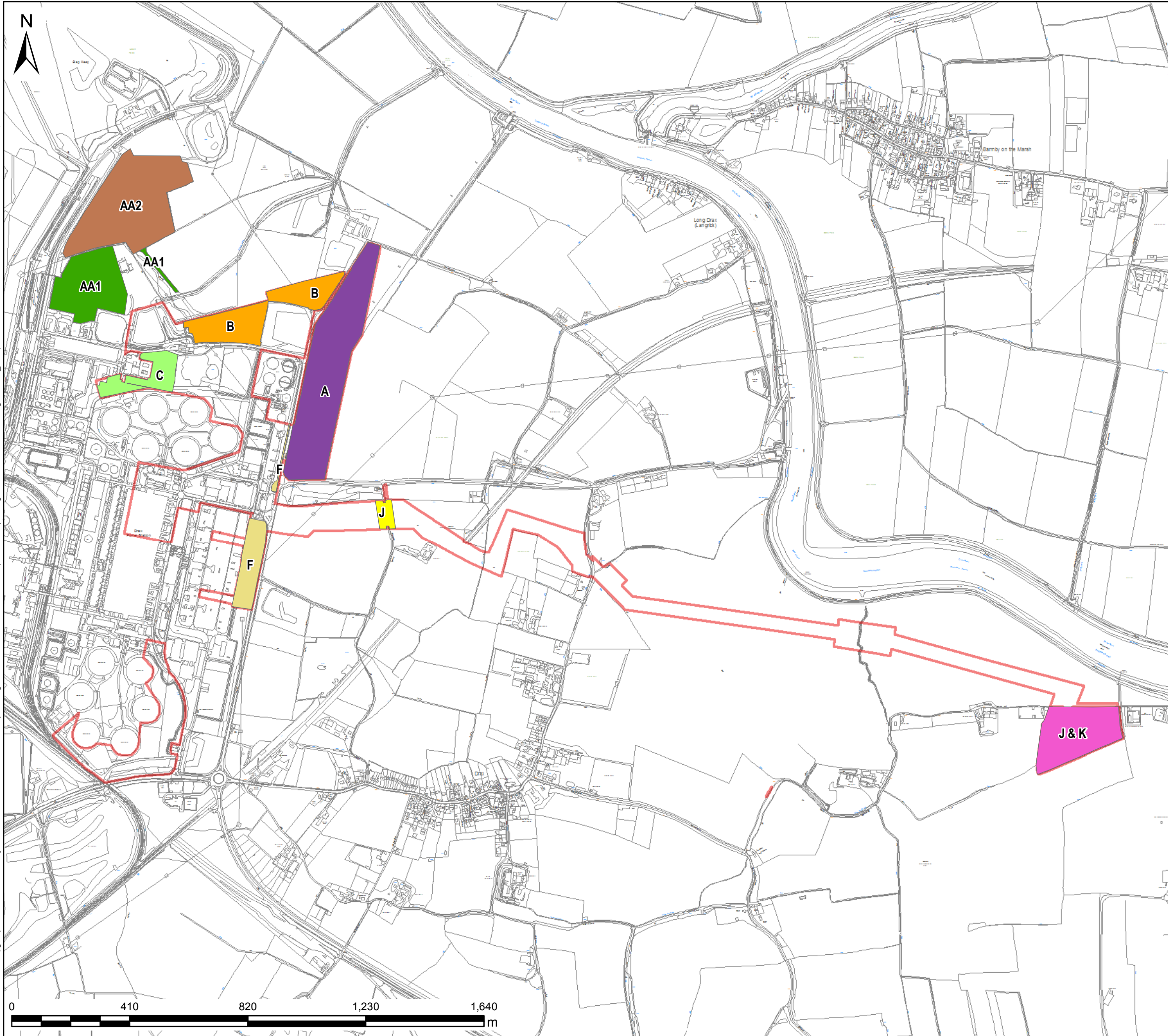
Figure 1.3  
Current and Proposed Land Use

SCALE @ A3: <div>13,000 @ A3</div>	CHECKED: <div>CS</div>	APPROVED: <div>CT</div>
PROJECT No: <div>70037047</div>	DESIGNED: <div>WSP</div>	DRAWN: <div>RMcC</div>
DATE: <div>23/04/2018</div>		REV: <div>A</div>

DRAWING No:

70037047-1.3

© WSP UK Ltd



**Key**

Site Boundary

**Compensation Areas**

- A
- B
- C
- F
- J
- J & K

**Additional Areas**

- AA2 - Peat Storage Area
- AA3 - Skylark Reserve
- AA1 - Old Wood Yard

**Note:**  
CA H has been removed as planning permission has been granted under a separate application

Contains Ordnance Survey data © Crown copyright 2018. All rights reserved.  
License number 0100031673  
Infrastructure Planning (Applications: Prescribed Forms and Procedure) Regulations 2009 - Regulation 5(2)(a)

REV	DATE	BY	DESCRIPTION	CHK	APP

DRAWING STATUS: **DRAFT**

**wsp**

Three White Rose Office Park, Millshaw Park Lane, Leeds, LS11 0DL, UK  
Tel: +44 113 395 6200 Fax: +44 113 395 6201  
wsp.com

CLIENT: **drax**

PROJECT: **The Drax Power (Generating Stations) Order**

TITLE: **Figure 6.7.4: Compensation Areas Overview Plan**

SCALE @ A3: 13,000 @ A3	CHECKED: MB	APPROVED: CT
PROJECT No: 70037047	DESIGNED: MB	DRAWN: RMcC
DATE: 23/08/2018		REV: -

DRAWING No:  
Figure 6.7.4\_Compensation Areas Overview Plan.mxd

© WSP UK Ltd